

# TM1: IMPLEMENTING SUSTAINABLE DIMENSIONS

NOVEMBER 16<sup>TH</sup>, 2011



## TM1 User Conference

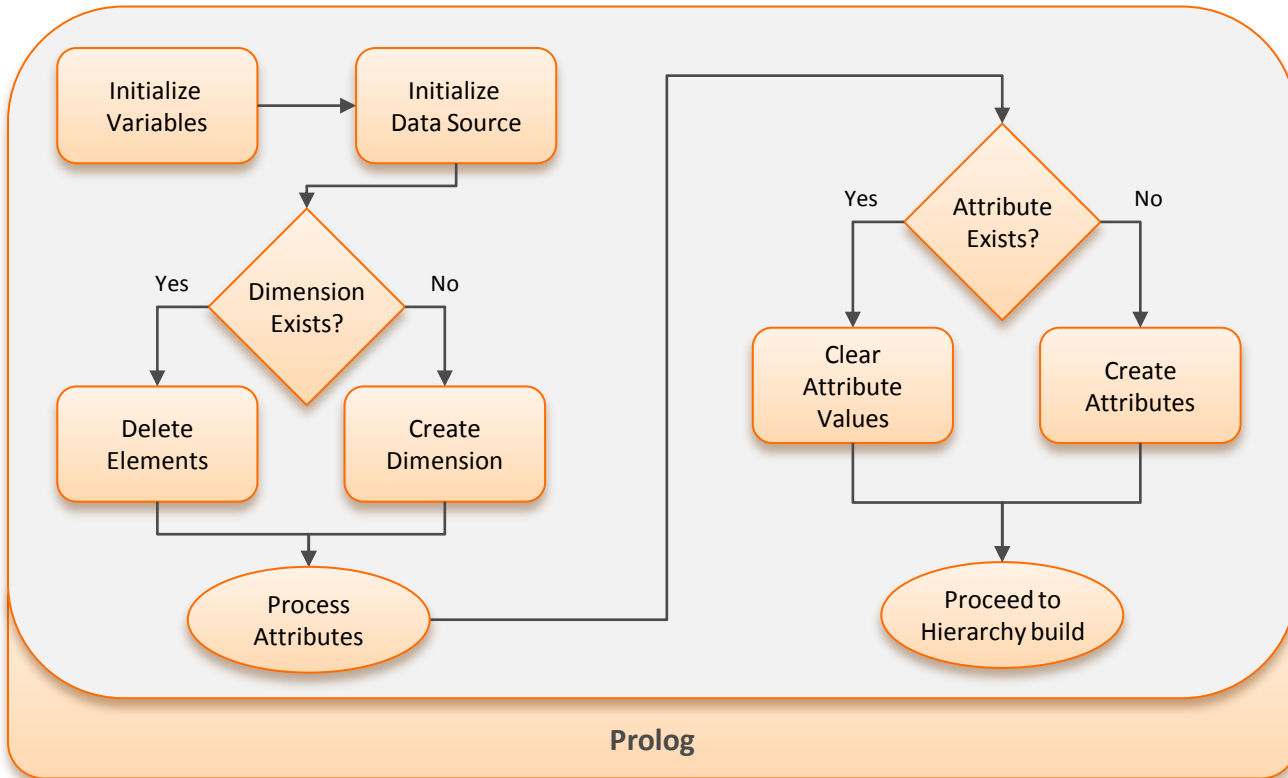
NOVEMBER 2011



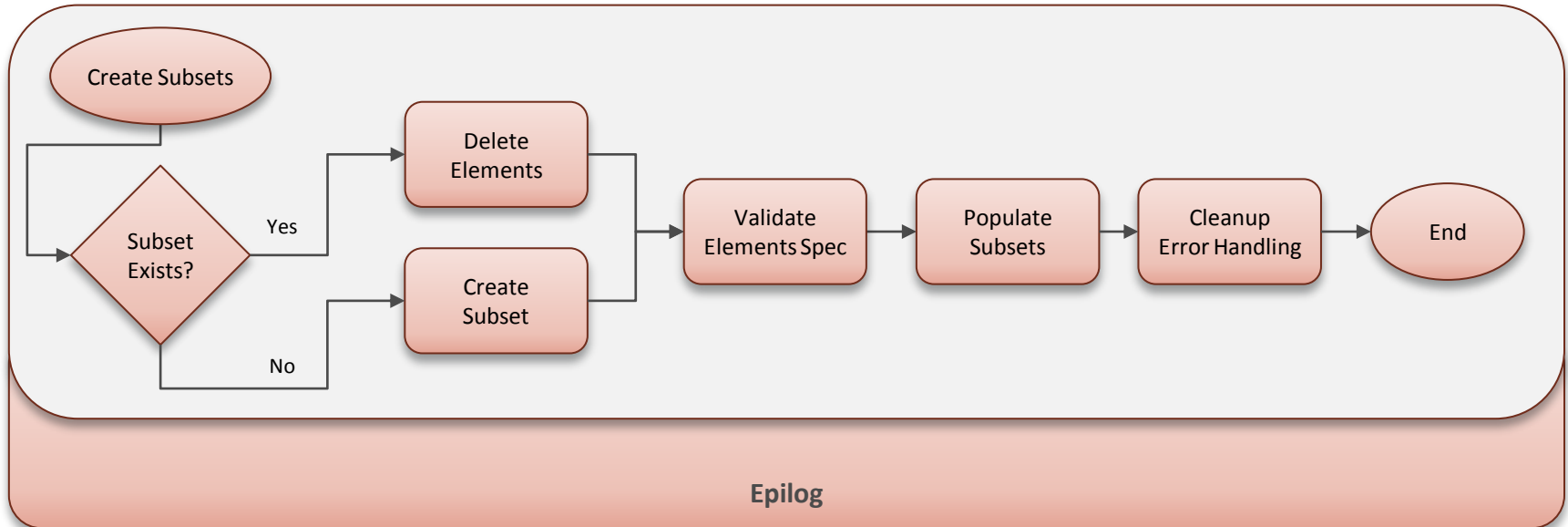
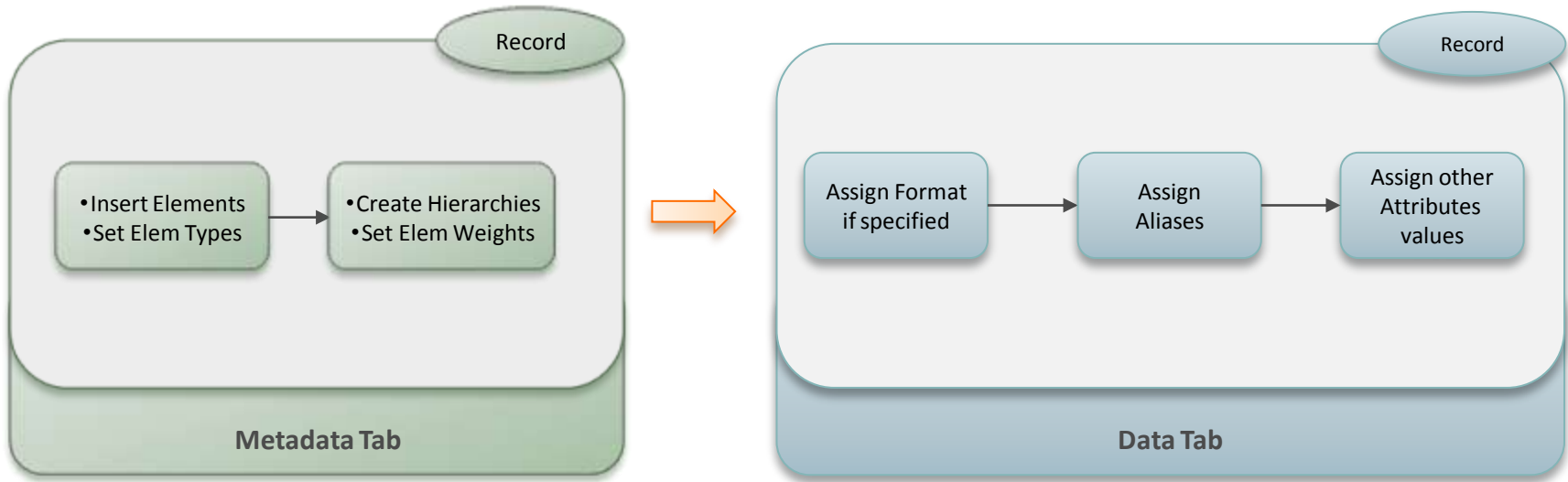
## IMPORTANT DISCLAIMER

- The Information contained in this presentation is provided for informational purposes only.
- While efforts were made to verify the completeness and accuracy of information contained in this presentation, it is provided “as is”, without warranty of any kind, express or implied.
- Canrock Solutions will not be responsible for any damages arising out of the use of, or otherwise related to, this presentation or any other documentation.
- Nothing contained in this presentation is intended to, or shall have the effect of creating any warranty or representation from Canrock Solutions or its affiliates.

# BEST PRACTICE TM1 DIMENSION BUILD - PROLOG



# BEST PRACTICE TM1 DIMENSION BUILD – METADATA, DATA, EPILOG



[] = 'Q' | 'A' ;